

# Proposed Development Review

## Multi-Dwelling Residential

### 180-200 Units -- R-24+ Residential Zone

3.3-Acre Site is located North  
of 1040 SW 66<sup>th</sup> Avenue

Virtual Neighborhood Meeting  
Wednesday September 18, 2024  
6:00pm Start



# Welcome to the Neighborhood Meeting

## Using MS Teams to participate during Q&A:

- Please “Raise Your Hand” to be recognized during Q&A portion of meeting
- Once recognized, please “Unmute” yourself to ask your question
- Questions can also be sent using “Q & A” at any point during the meeting



## MENU BAR

**Virtual Neighborhood Meeting**  
**Development Review: Multi-Dwelling Residential**  
**Site north of 1040 SW 66<sup>th</sup> Avenue (Tax Map 1S101AD, Tax Lot 100)**  
**Wednesday September 18, 2024 6:00 p.m.**

Presenter: Ken Sandblast, Westlake Consultants

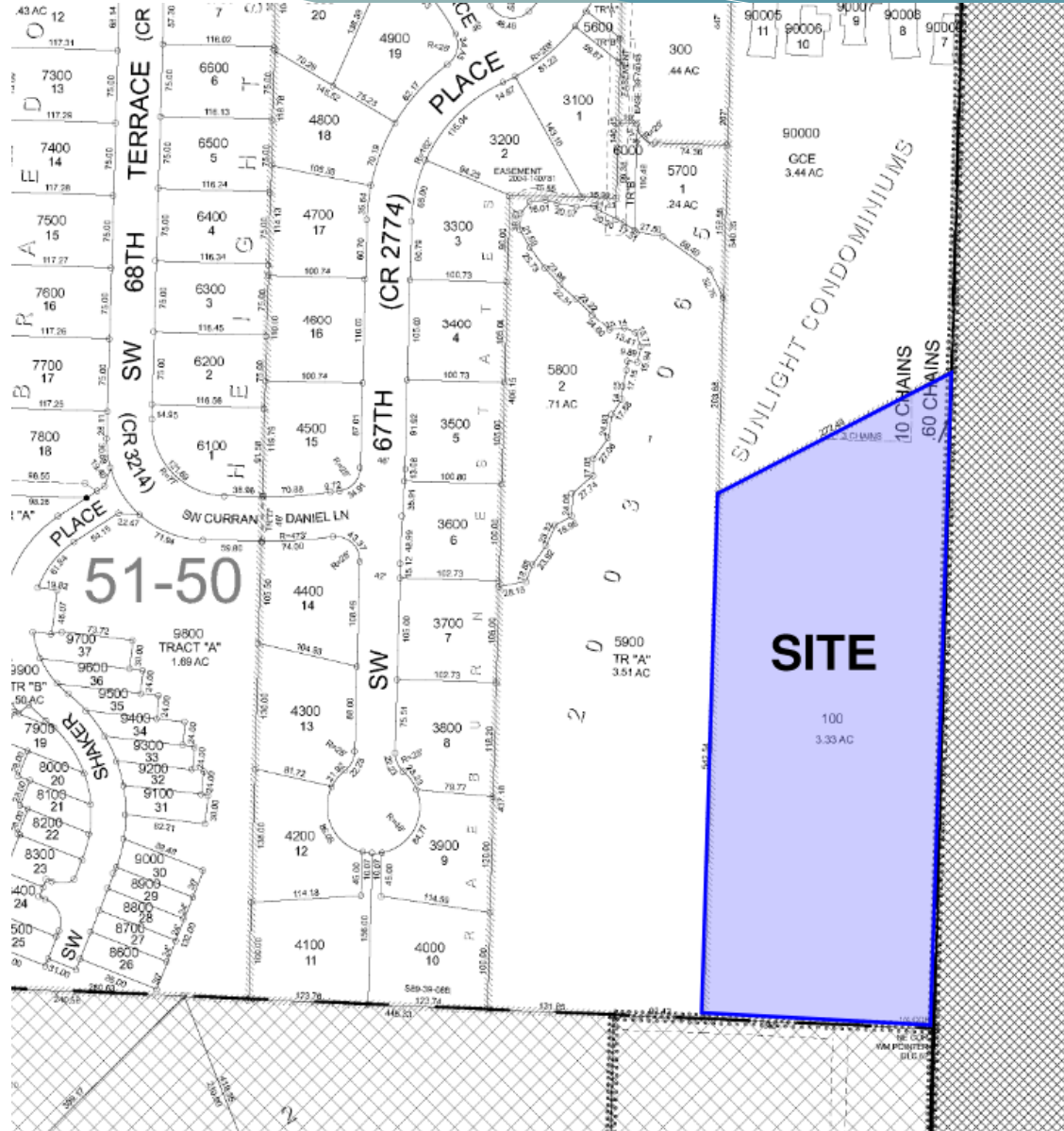
	<b>AGENDA</b>
5 Min.	Introductions
10 Min.	Land Use & Zoning
10 Min.	Public Facilities / Services
10 Min.	Transportation
10 Min.	Site Plan
15 Min.	Question & Answer



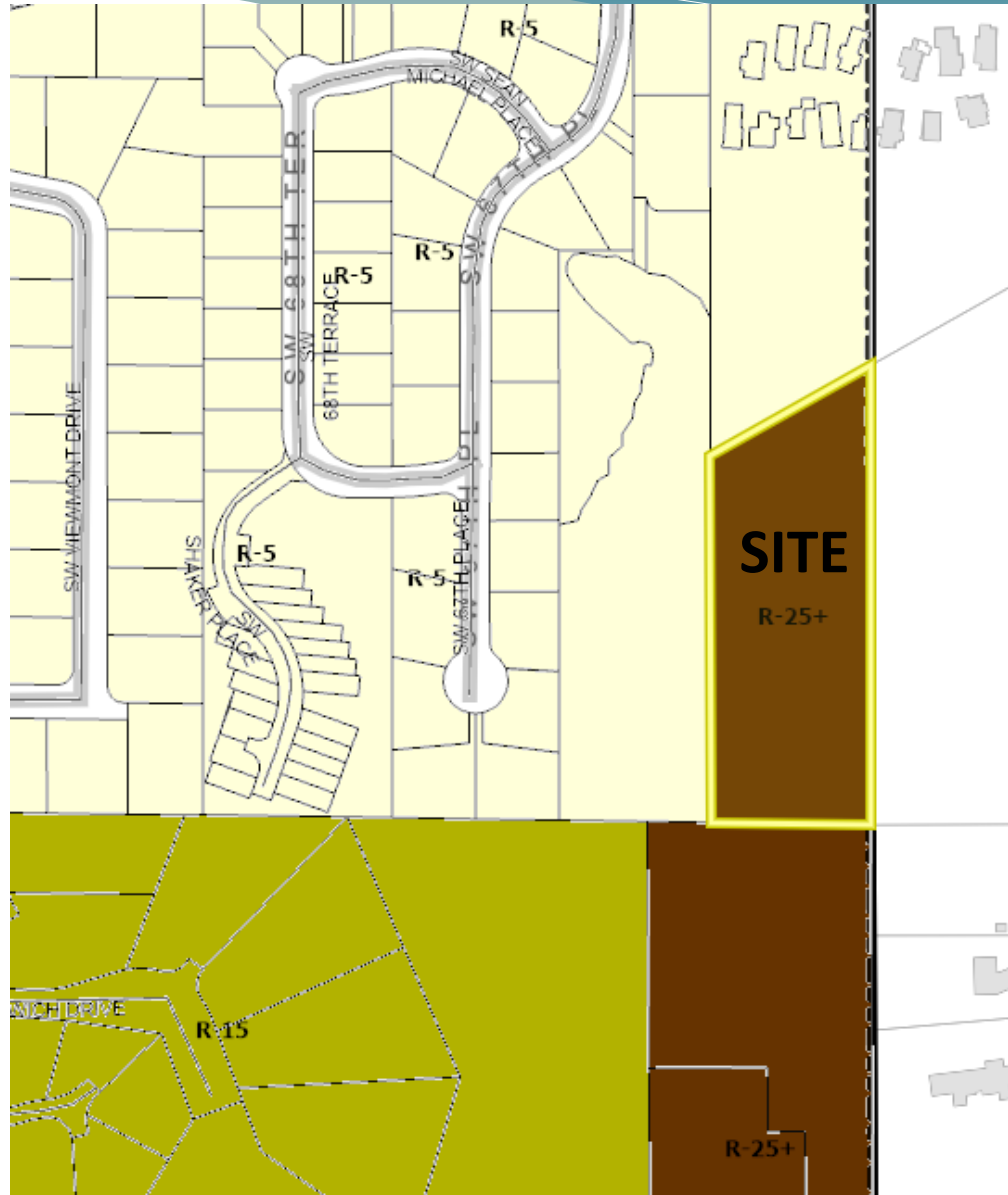
# VICINITY and SITE



# Tax Map of Property



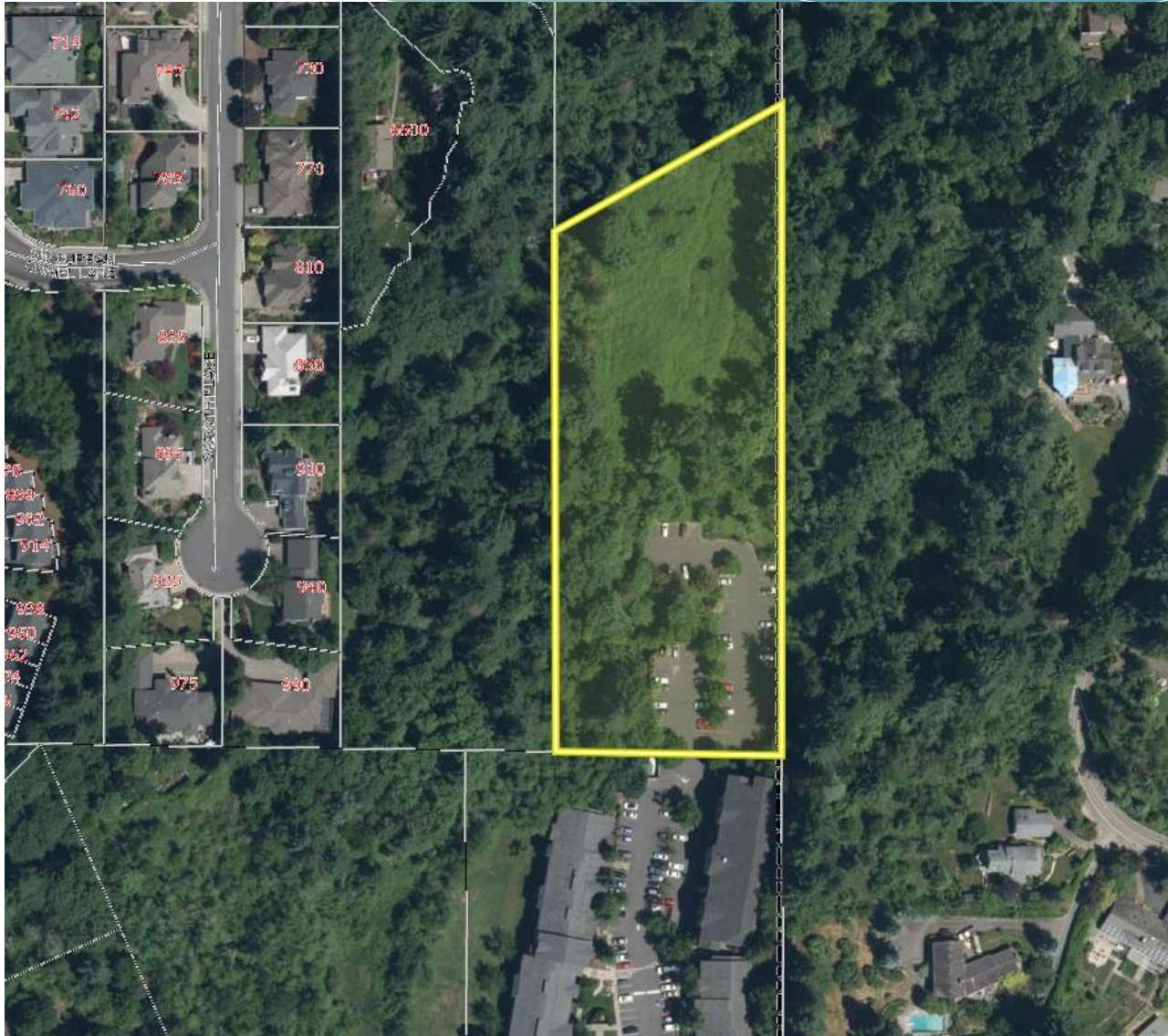
# Zoning Map



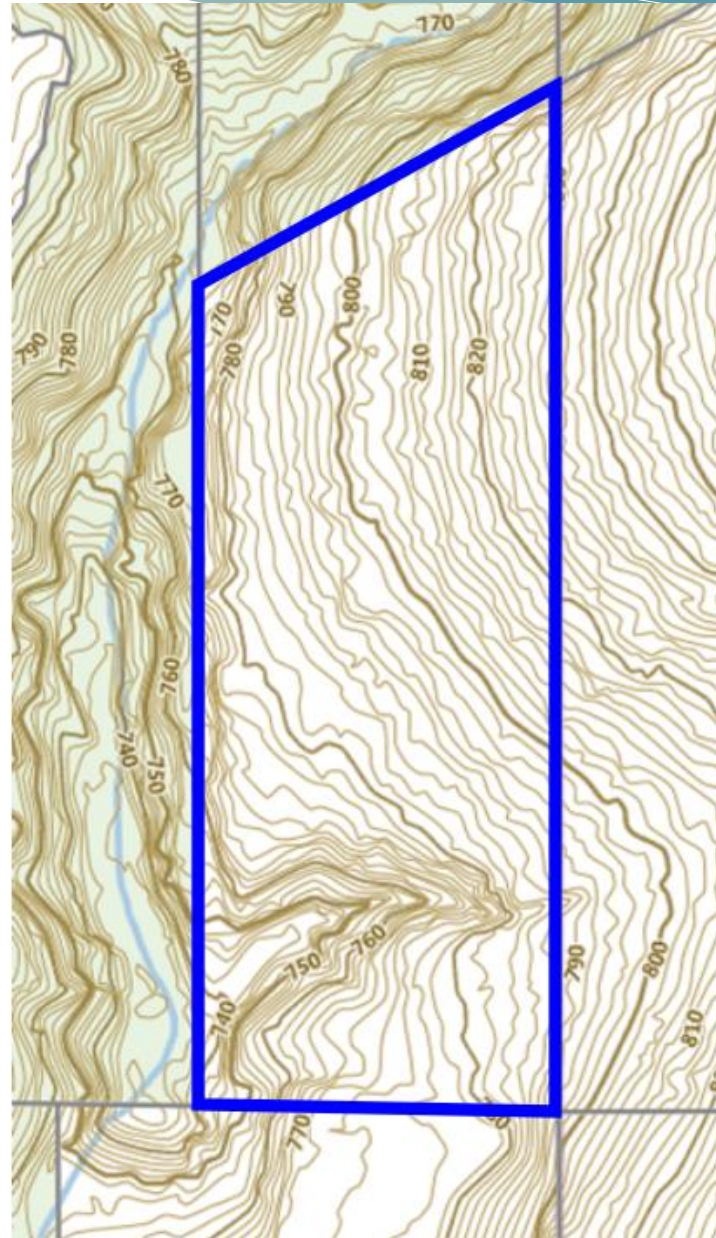


# EXISTING CONDITIONS

# Aerial Photo

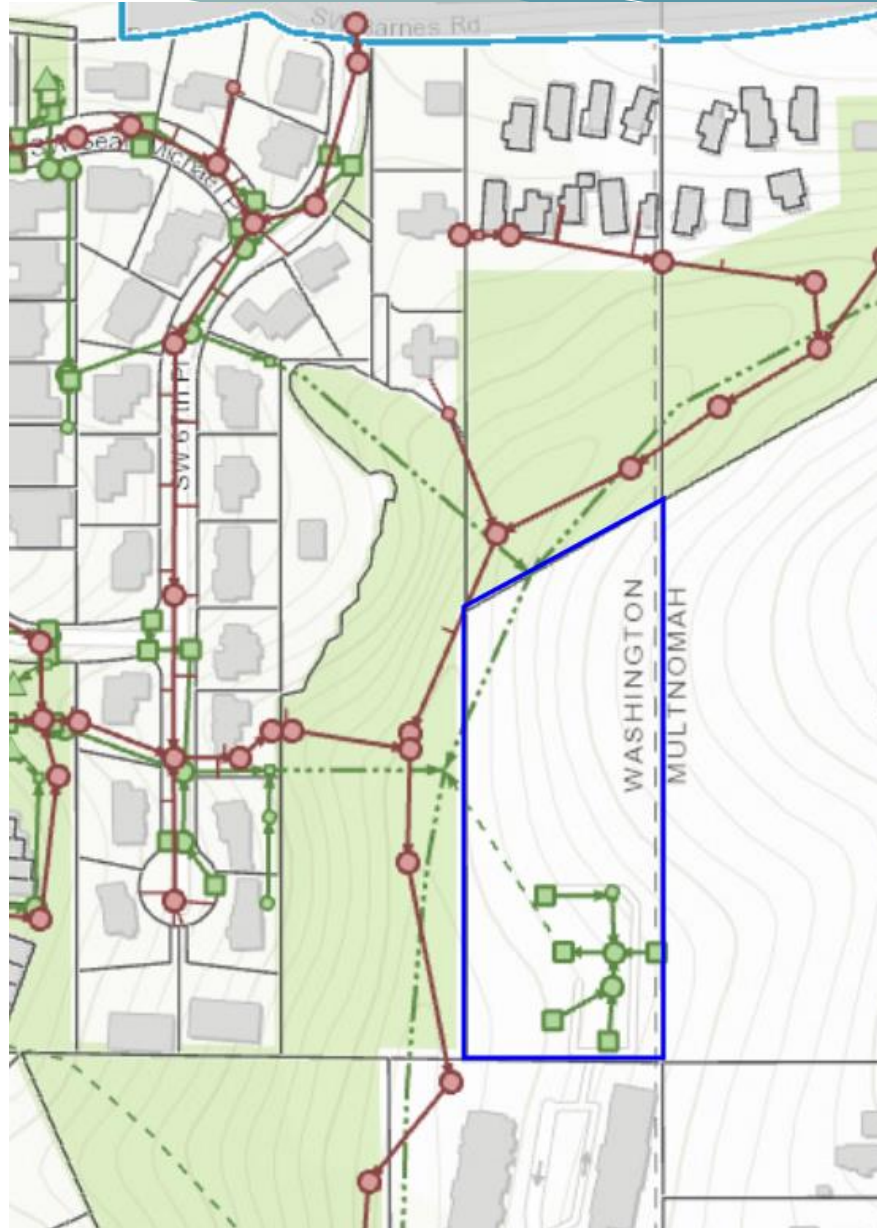


# Site Contours

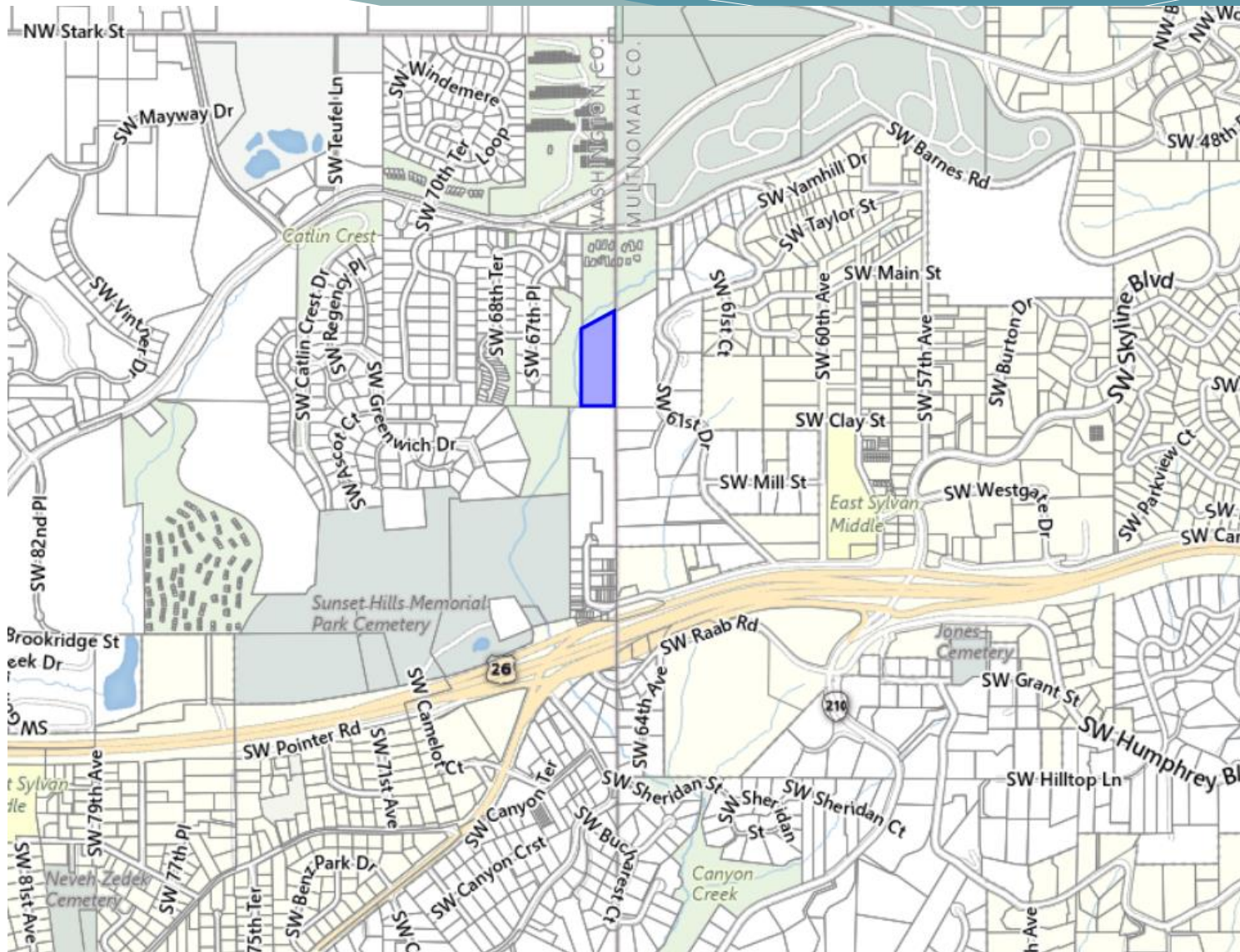


# SITE UTILITIES and TRANSPORTATION

# Site Utilities



# Transportation



# Local Street Connectivity



- Required Street Connection
- ▲ Potential Street Connection if practicable; if not, a Required Accessway
- Local Street Connectivity Lands

# PROPOSED PROJECT



# Site Concept Plan



# Q & A

## Using MS Teams to participate during Q&A:

- Please “Raise Your Hand” to be recognized during Q&A portion of meeting
- Once recognized, please “Unmute” yourself to ask your question
- Questions can also be sent using “Q & A” at any point during the meeting



### MENU BAR

# Contact Information

For any questions or input you may have that was not addressed at tonight's meeting, email or call:

Ken Sandblast  
Westlake Consultants

[ksandblast@westlakeconsultants.com](mailto:ksandblast@westlakeconsultants.com)

503-684-0652