

Proposed Subdivision

29 Lots R-6 Residential

13325 & 13355 NW Thompson Road

Virtual Neighborhood Meeting

Tuesday February 27, 2024

6:00pm Start

Welcome to the Neighborhood Meeting

Using MS Teams to participate during Q&A:

- Please “Raise Your Hand” to be recognized during Q&A portion of meeting
- Once recognized, please “Unmute” yourself to ask your question
- Questions can also be sent using “Chat” at any point during the meeting

Hover your mouse over your screen to make the menu bar appear



MENU BAR

Virtual Neighborhood Meeting
29-Lot Subdivision – 13325 & 13355 NW Thompson Rd.
Tuesday, February 27, 2024 6:00 p.m.

Presenter: Ken Sandblast, Westlake Consultants

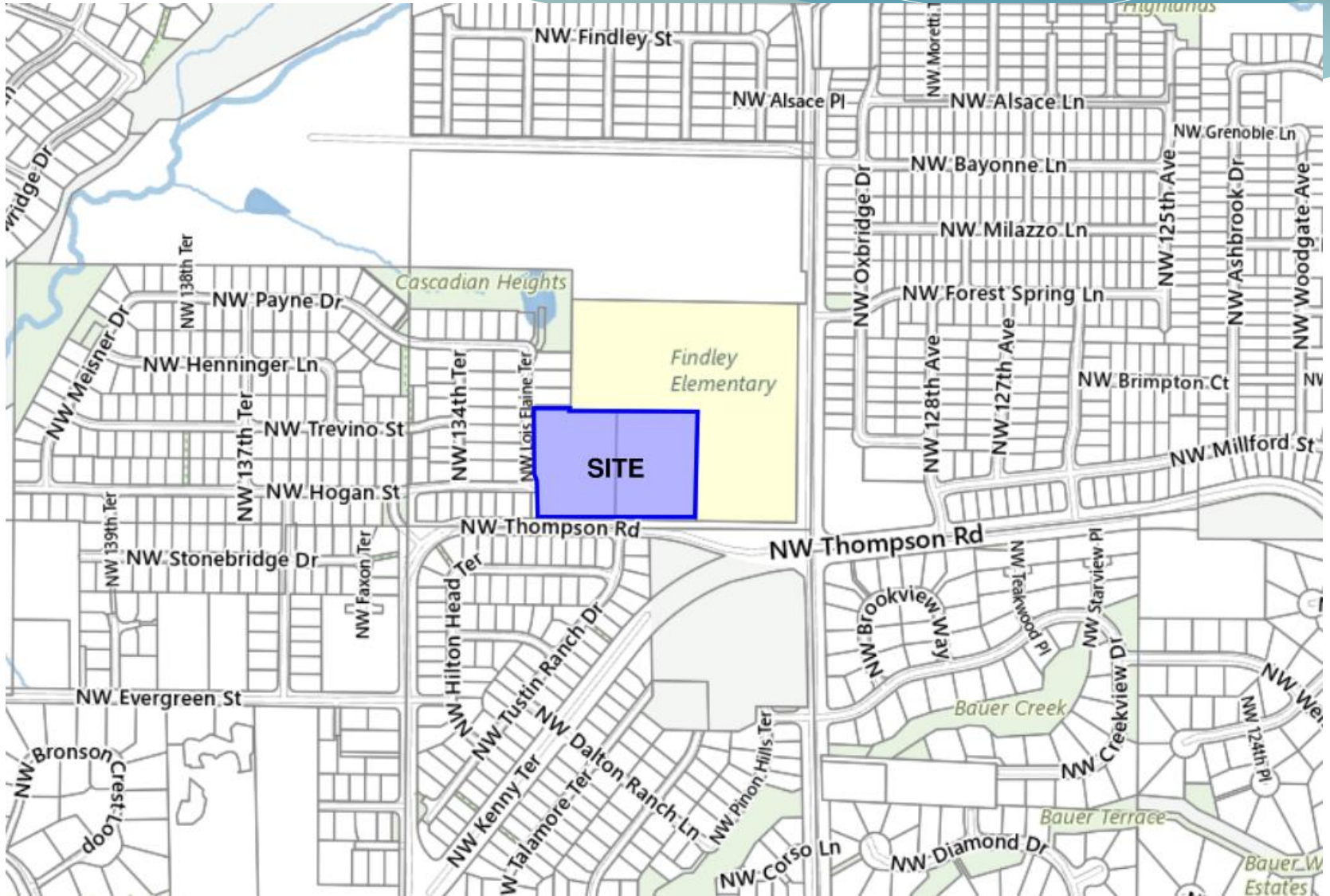
AGENDA	
5 Min.	Introductions
10 Min.	Land Use & Zoning
10 Min.	Public Facilities / Services
10 Min.	Transportation
10 Min.	Site Plan
15 Min.	Question & Answer

Virtual Neighborhood Meeting
29-Lot Subdivision – 13325 & 13355 NW Thompson Rd.
Tuesday, February, 2024 6:00 p.m.
Sign-in Sheet

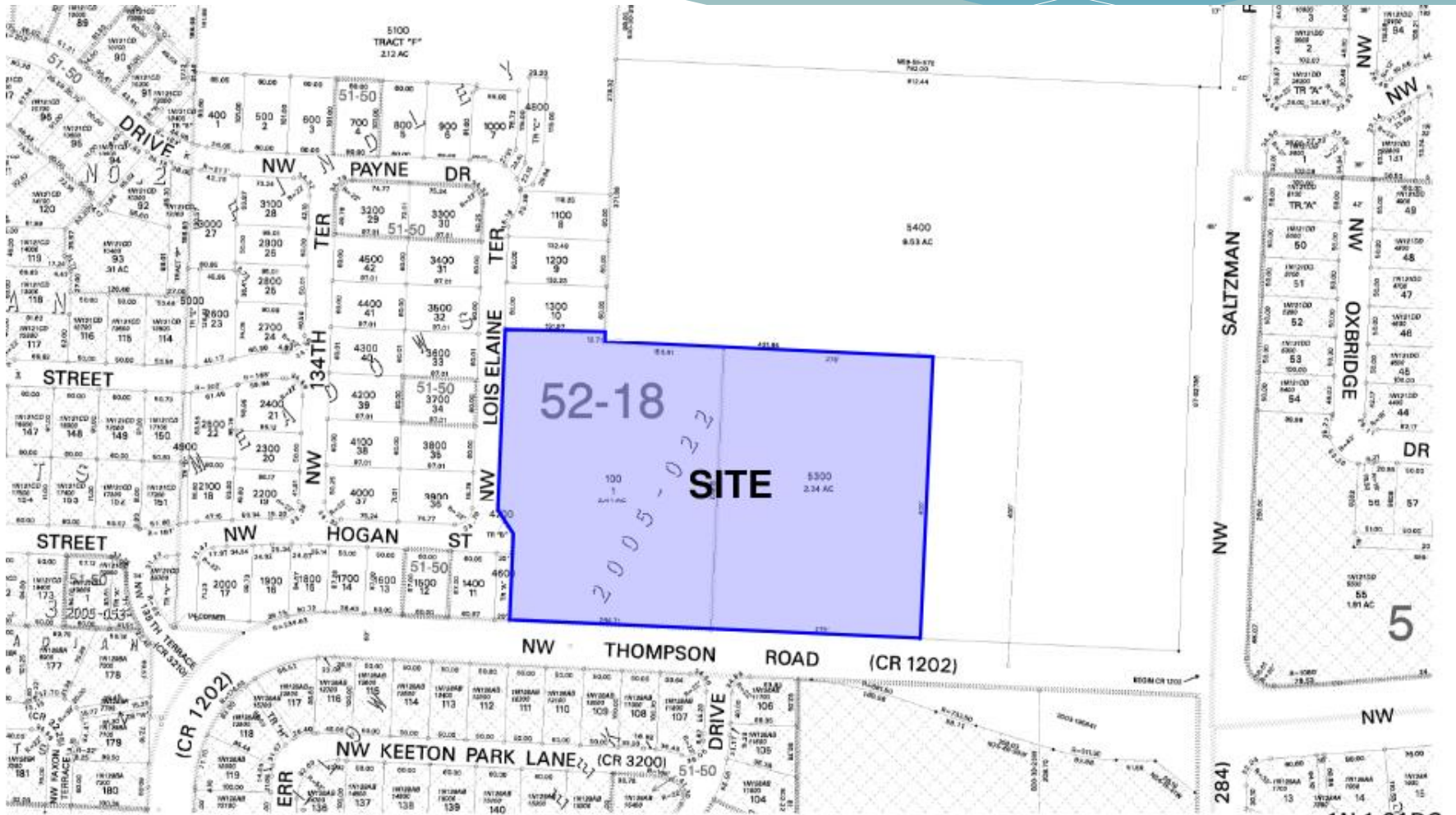
Name	Address	Phone	E-mail

VICINITY and SITE

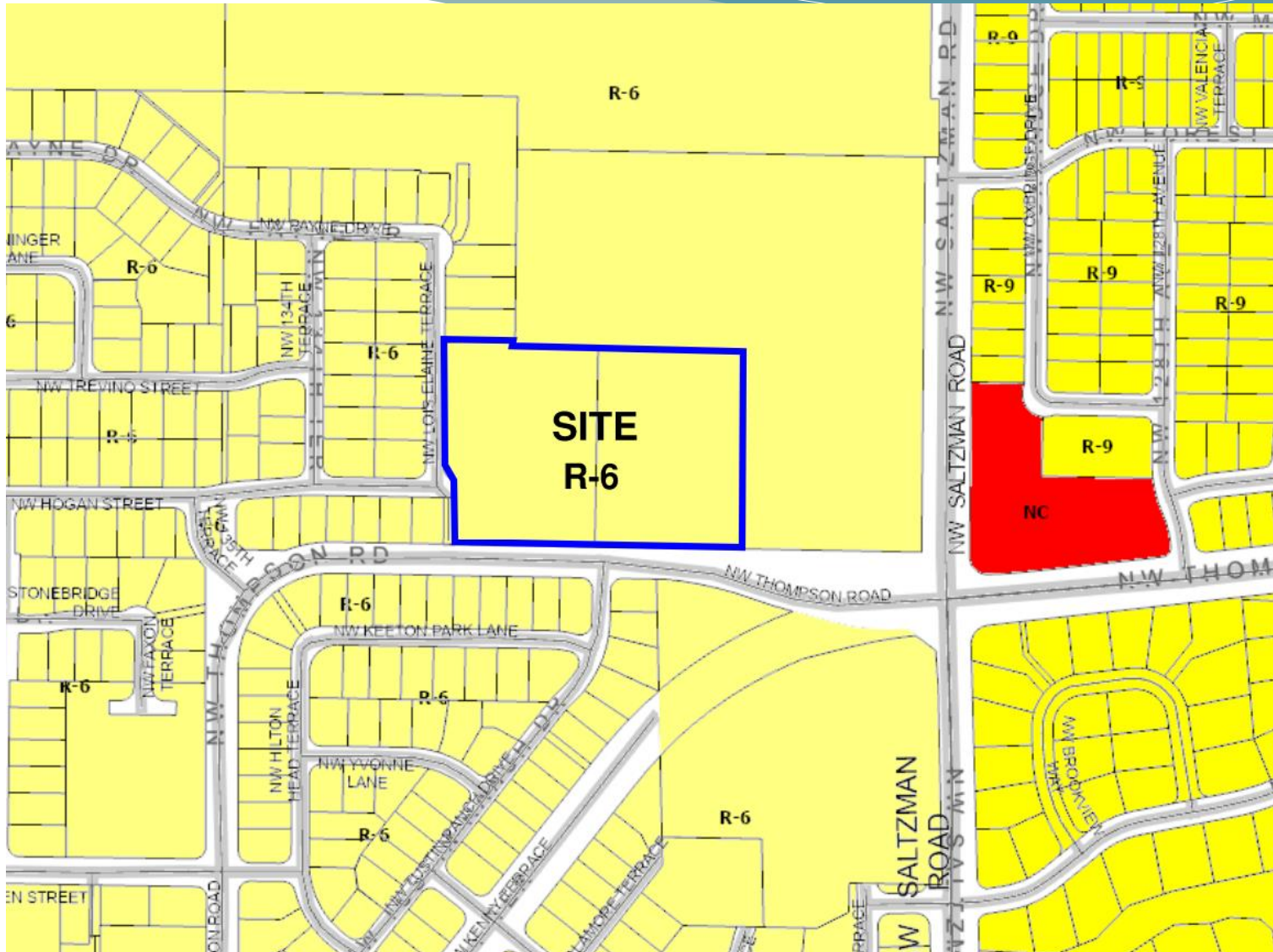
Vicinity Map



Tax Map of Property

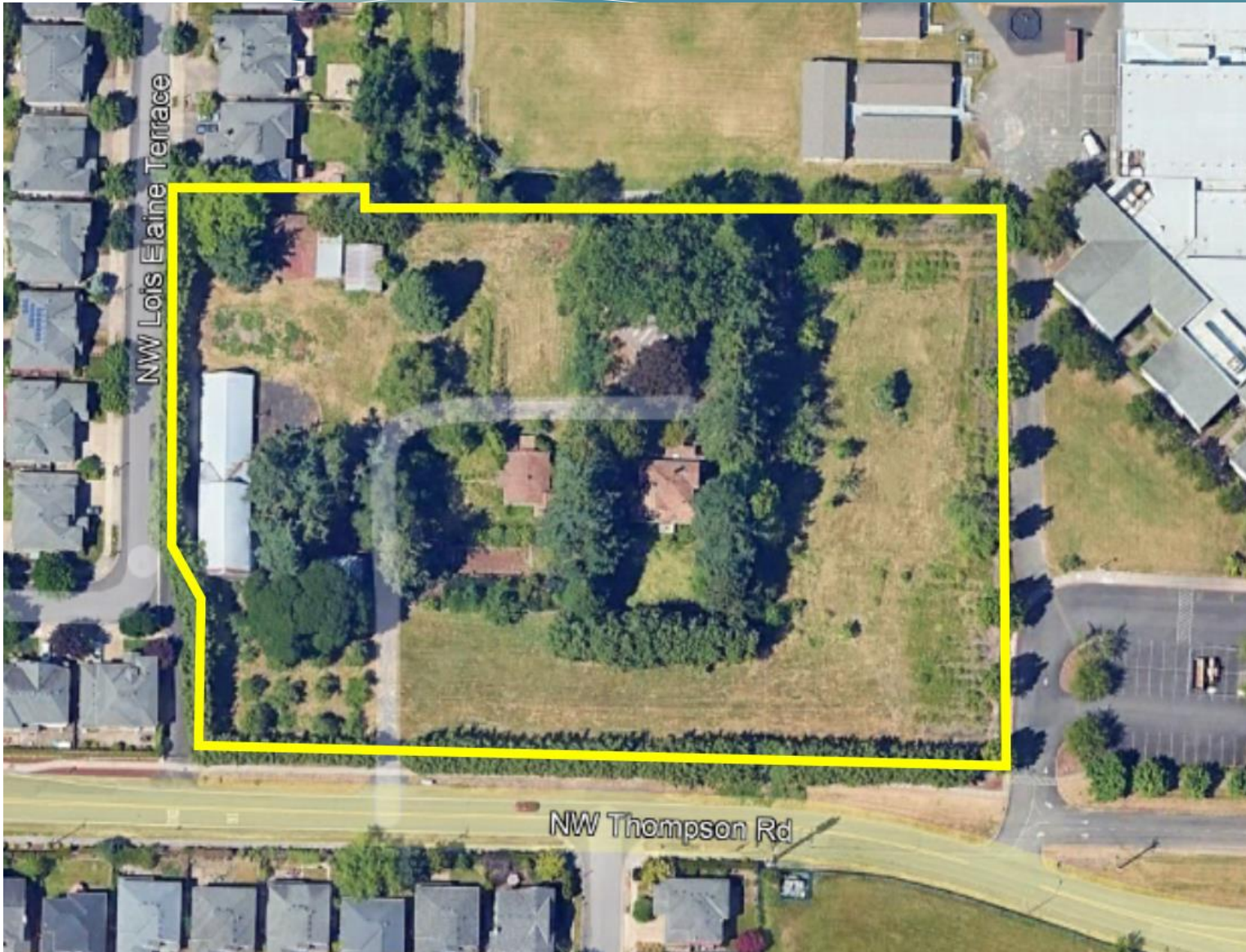


Zoning Map

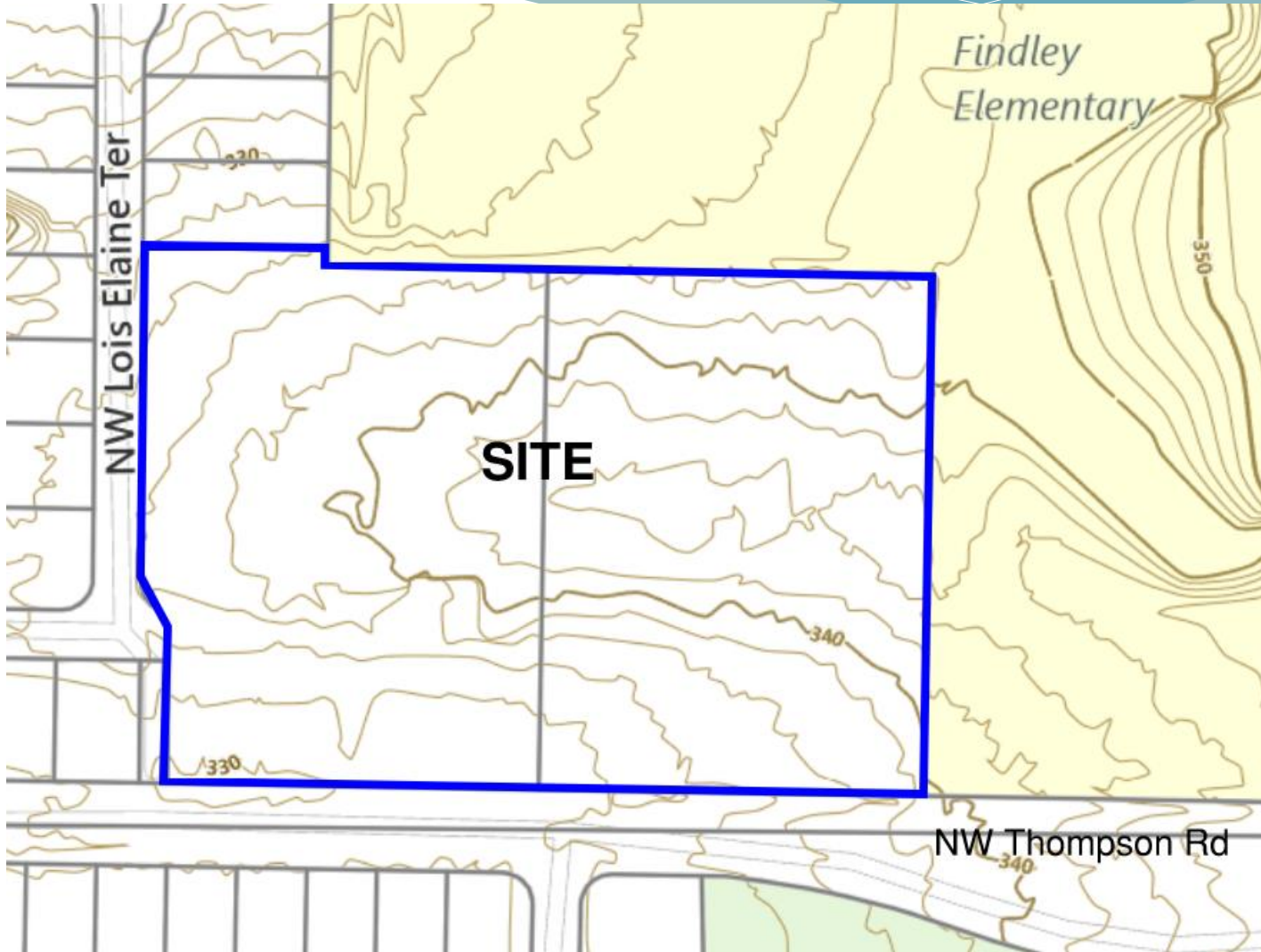


EXISTING CONDITIONS

Aerial Photo

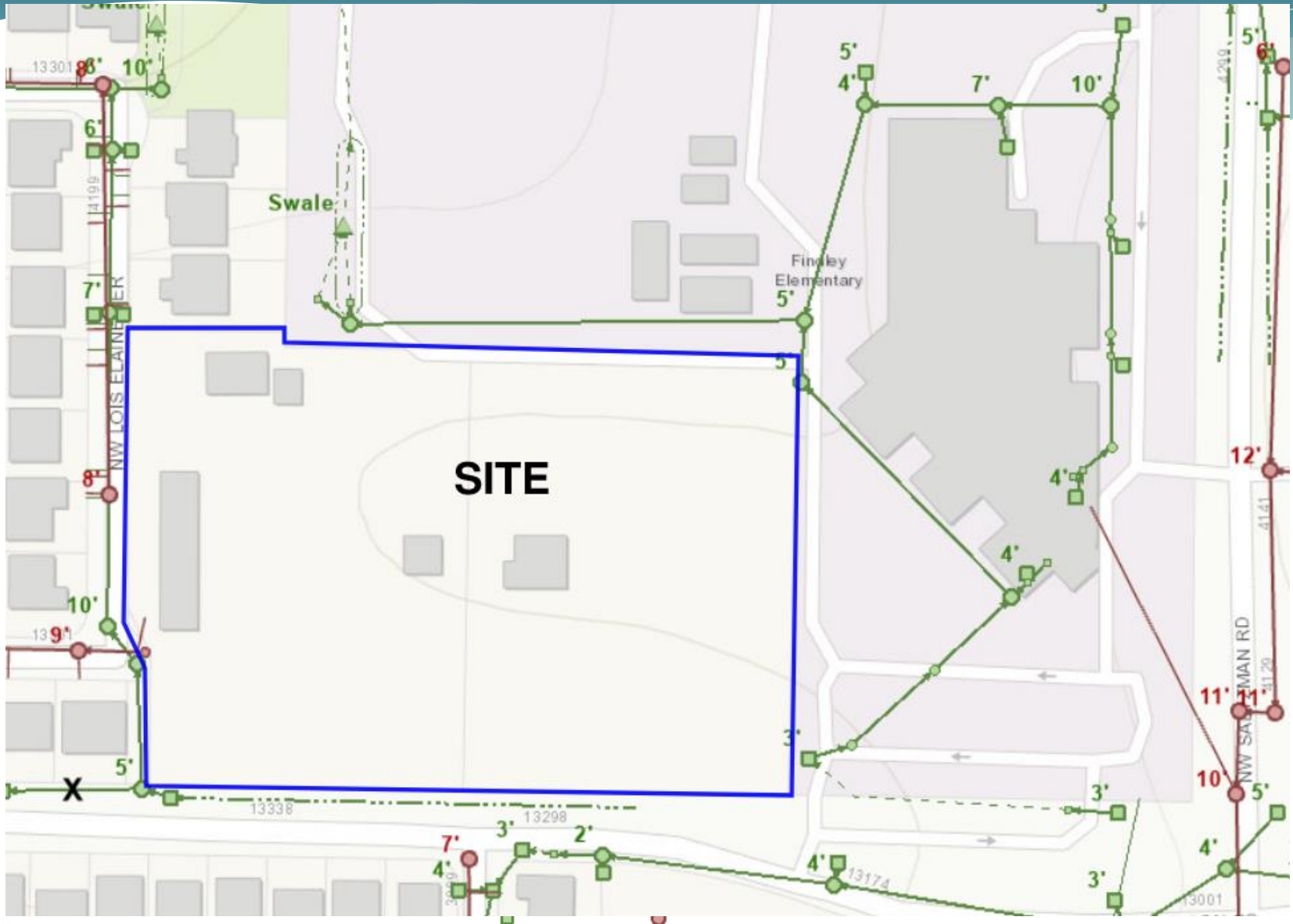


Existing Conditions



SITE UTILITIES and TRANSPORTATION

Site Utilities



Transportation

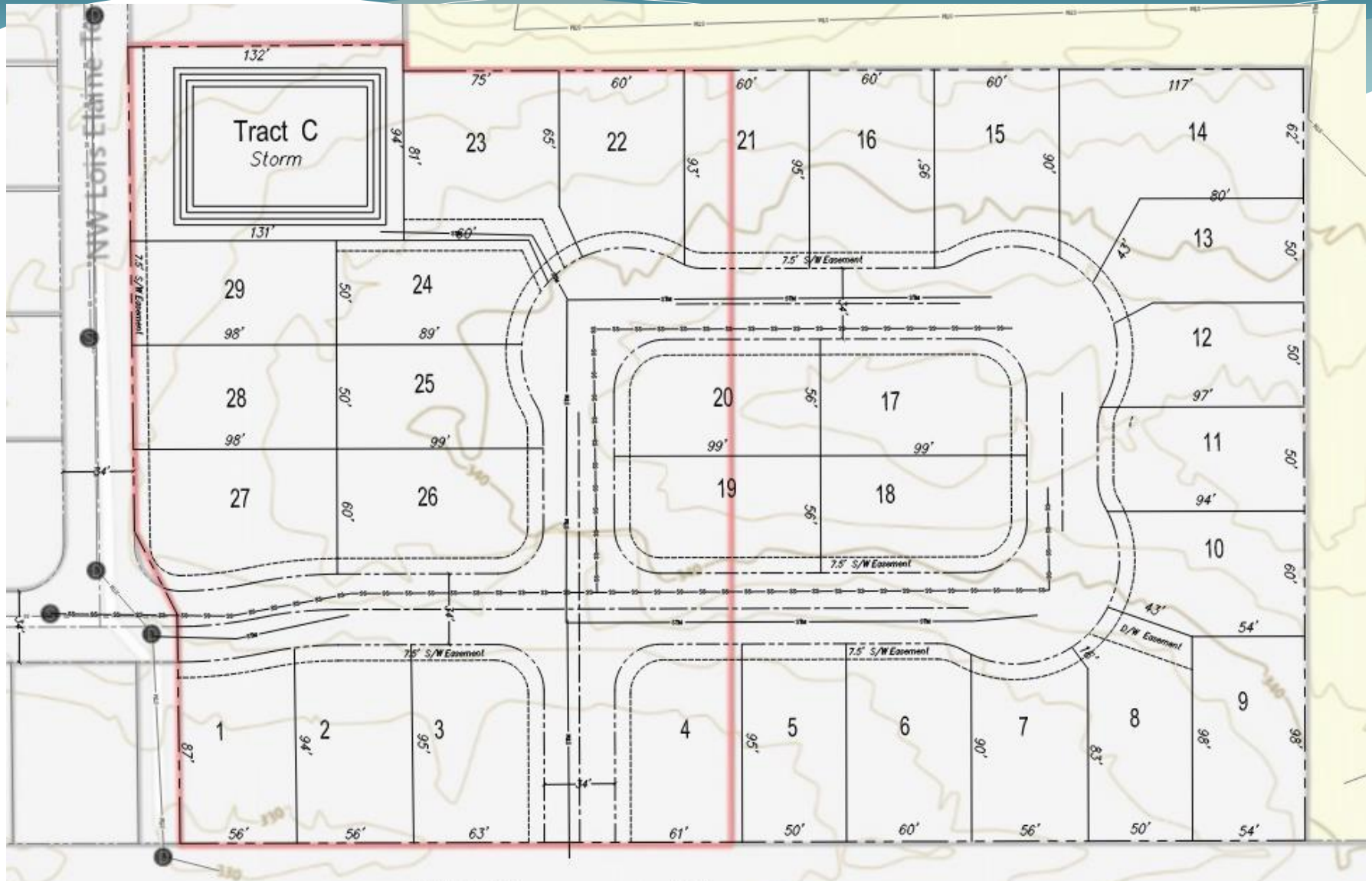


 Local Street Connectivity Lands

Source: Bethany Community Plan

PROPOSED PROJECT

Site Concept Plan



Q & A

Using MS Teams to participate during Q&A:

- Please “Raise Your Hand” to be recognized during Q&A portion of meeting
- Once recognized, please “Unmute” yourself to ask your question
- Questions can also be sent using “Chat” at any point during the meeting

Hover your mouse over your screen to make the menu bar appear



MENU BAR

Contact Information

For any questions or input you may have that was not addressed at tonight's meeting, email or call:

Ken Sandblast
Westlake Consultants

ksandblast@westlakeconsultants.com

503-684-0652